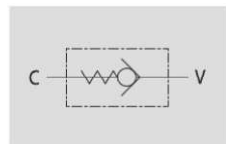


SAE PORT
SAE 6 SAE J514

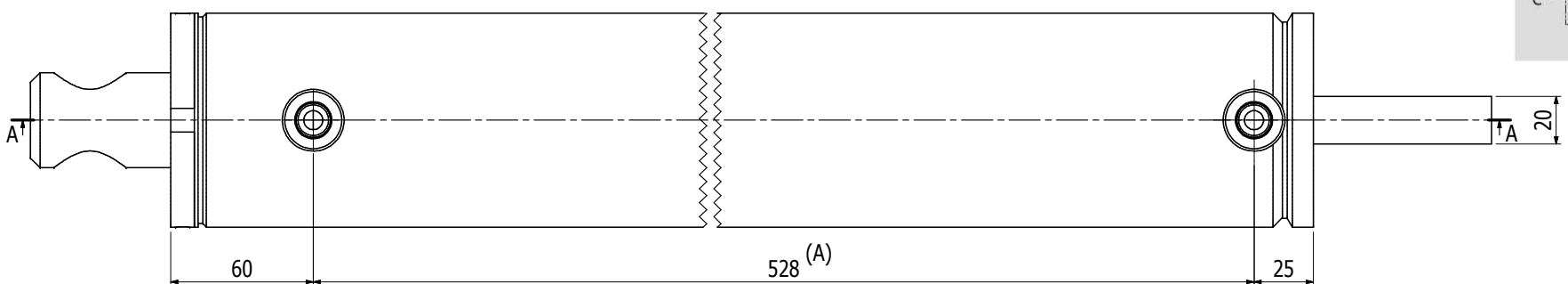
Integrated one direction
check valve - Valvola unidirezionale 1/4"
V0591 COD.352060100

Lmin=692 Lmax=1142 Stroke=450

Hydraulic schema



DIREZIONE FLUSSO LIBERO
FREE FLOW



POS.	CODICE	REV.	DESCRIPTION	QTÀ
7.7	971000127		O-Ring DOWTY 127 (2,62x36,14)	1
7.6	973100082		Guide ring I.75 E. 80 x 9,7	2
7.5	979080065		PISTON SEAL D.80 Sp.11 PHD8065-PDH113 - D.i.65	1
7.4	971000151		O-Ring DOWTY 151 (2,62x75,87)	1
7.3	971200845		SEAL GDS - 845	1
7.2	976400500		ROD SEAL 40/50/8	1
7.1	975000040		WIPER D. 40	1
7	351880423		Sealing Kit 80/40 32080400 + 31880301	1
6	961040019		Screwed Pin M6x16 conical	1
5	31880301		Piston Ø80/35 M30x2 H47 Valve Cavity	1
4	941044023		Spacer Ø40/50 L.25	1
3	32080400	C	Head 80/40 H.60	1
2	DK4222P2	A	Cylinder rod 80/40x450	1
1	DK4222P1	A	Cylinder tube 80/40x450	1

PART	Material	Thickness of Chromium Plating	Hardness of Chromium plating	Roughness	Corrosion resistance (h) according to ISO10289	TOLERANCE REF: DOC-A087 RAW MATERIAL REF: DOC-A123
Rod	Ck45	>=20 µm	>=950 HV0,2	Ra<=0,2µm Rt <=2µm	200h NSS rating >=9	Drawing and technical data property of FAROIL srl
Tube	E355	////	////	Ra<=0,4µm	////	

CUSTOMER APPROVAL				Painting: BLACK RAL9005		Weight																
APPROVED BY	APPROVAL DATE	Cylinder Marked FA MONTH/YEAR				16,6 kg																
Max Working Pressure 220 Bar. Working temperature from -30C to +100C Max working speed 0,5 m/s																						
<table border="1"> <thead> <tr> <th>N°</th> <th>DATE</th> <th>MODIFICATION</th> <th>DONE BY</th> <th>N°</th> <th>DATE</th> <th>MODIFICATION</th> <th>DONE BY</th> </tr> </thead> <tbody> <tr> <td>A</td> <td>27/01/2018</td> <td>Was 398.59; Added spacer</td> <td></td> <td></td> <td></td> <td></td> <td></td> </tr> </tbody> </table>							N°	DATE	MODIFICATION	DONE BY	N°	DATE	MODIFICATION	DONE BY	A	27/01/2018	Was 398.59; Added spacer					
N°	DATE	MODIFICATION	DONE BY	N°	DATE	MODIFICATION	DONE BY															
A	27/01/2018	Was 398.59; Added spacer																				
FAROIL hydraulic cylinders			DANITECH		CODE N°	INDEX																
DOC-A116 Rev.C			CYLINDER Ø80/40x450		DK4222	A																
CUSTOMER REF.					SCALE	////																
					DATE	27/01/2018																
					DESIGNED BY	P.D.																
					APPROVED BY	GG																